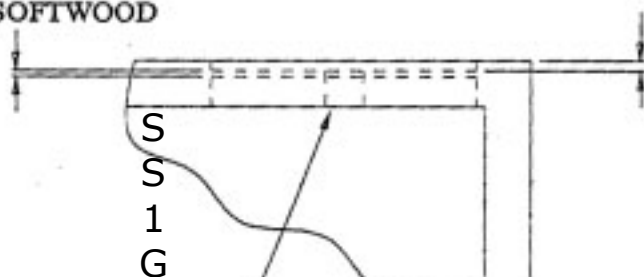


(608) 562-5460 • parts@woodworkingparts.com

- NOTES:** (1) MAKE A KERFING BLADE CUT .0875 FROM THE BACK OF BOX MINIMUM KERFING DEPTH OF 7/16".  
(2) SLOT 1/16" TO ACCEPT HINGE KNUCKLE.  
(3) SLOT 5/16" TO CLEAR SPRING.  
(4) MINIMUM OF A 1/4" WOOD THICKNESS CUT WITH GRAIN OF WOOD.

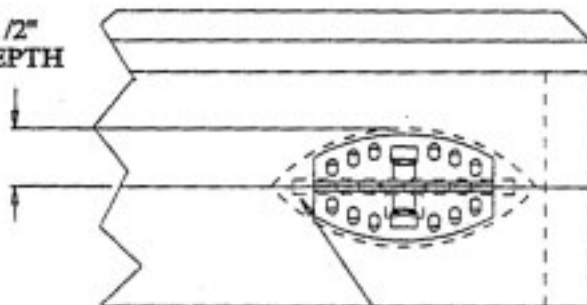
.046 FOR HARDWOOD  
.032 FOR SOFTWOOD

.0870 FROM BACK OF BOX

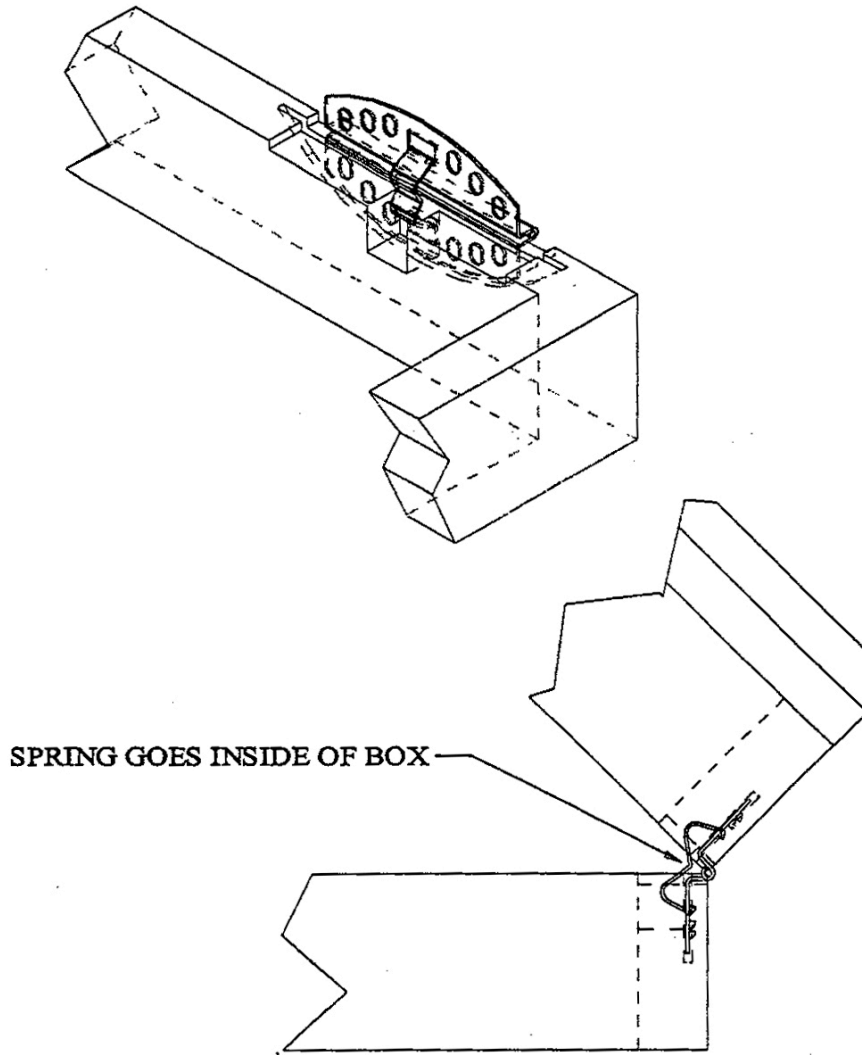


5/16" SLOT: 5/16" DEEP TO CLEAR SPRING

1/2"  
DEPTH

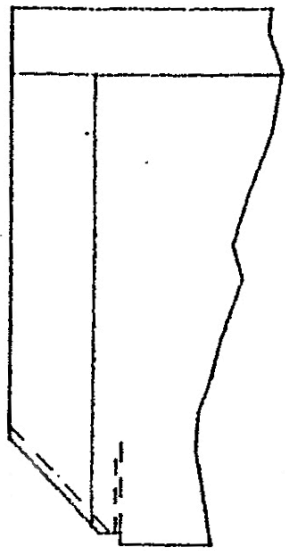


SLOT OR MORTISE 1/16" DEEP, BOTH  
SIDES TO ACCEPT HINGE KNUCKLE.

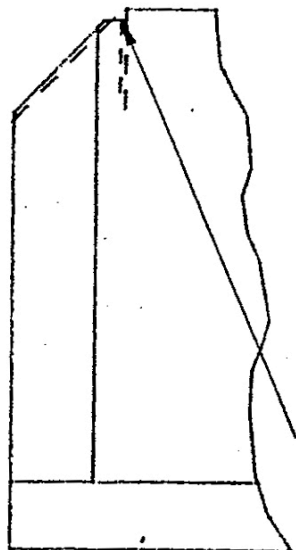


SPRING GOES INSIDE OF BOX

SIDE VIEW

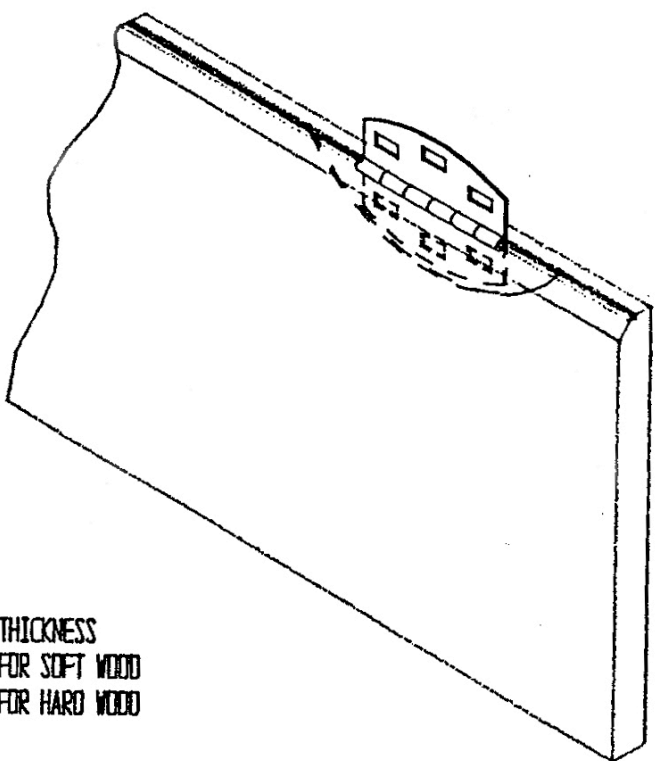
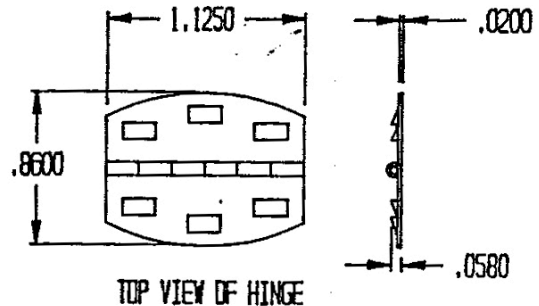


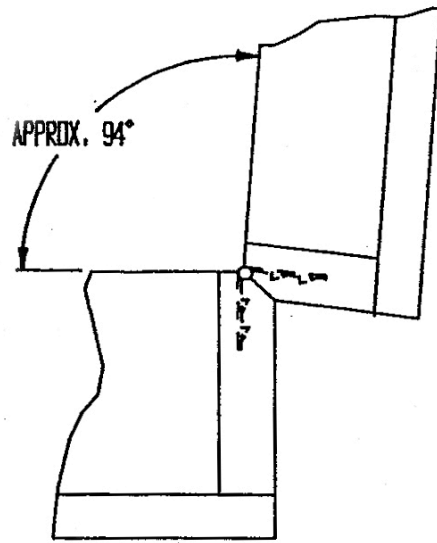
SIDE VIEW  
SCALE  
1:1.5



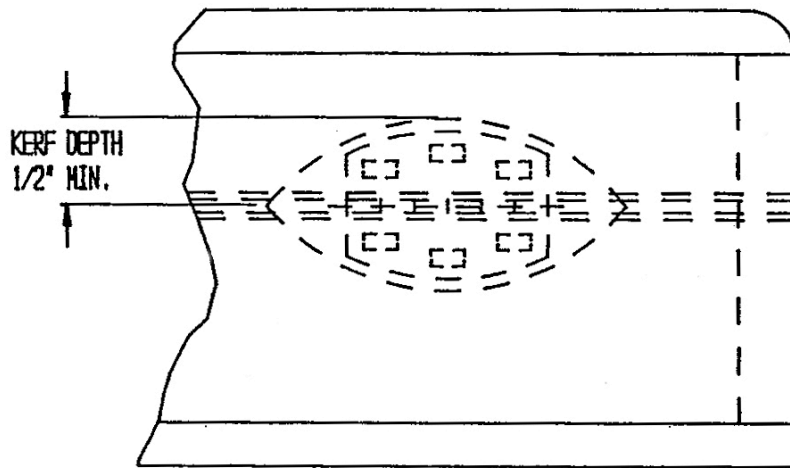
KERF THICKNESS  
.032 FOR SOFT WOOD  
.046 FOR HARD WOOD

- (1) 47° CHAMFER ON BACK, OUTSIDE EDGES OF BOTH TOP AND BOTTOMS OF BOX AS SHOWN IN SIDE VIEW.
- (2) 3/64 CLEARANCE SLOT FOR HINGE BARREL WHEN USING A SHALLOW CHAMFER
- (3) WHEN CHAMFER IS MADE SIMILAR TO DASHED LINES, BARREL CLEARANCE SLOT IS OPTIONAL.





SIDE VIEW



FRONT VIEW